

Photometric Report

MAC Encore Two – 10 Degree

MARTIN PROFESSIONAL R&D OPTICAL LABORATORY

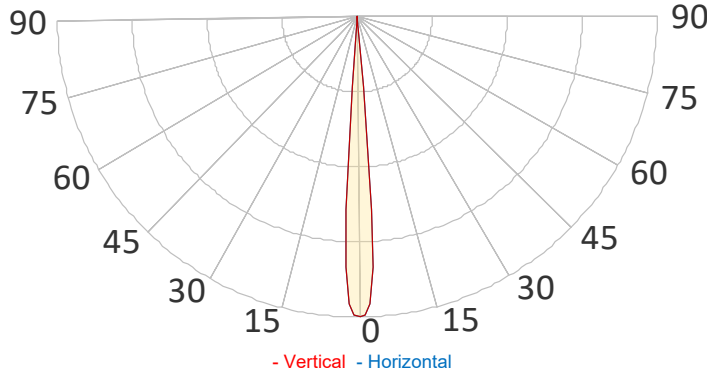
GENERAL SPECIFICATIONS

Total Fixture Output:	21000 lm
Light Engine Output:	57000 lm
Efficacy:	24.4 lm/W
Lens Option:	N/A
Beam Angle (50%):	5.1-51.9°
Field Angle (10%):	5.7-53.6°
Cut-off Angle (3%):	5.9-53.9°
CRI:	90 (+/-3)
TM-30 Rf:	90 (+/-3)
TM-30 Rg:	100 (+/-3)
TLCI:	90 (+/-3)
Color Temperature:	5600K (+/-300K)



SAMPLE MEASUREMENT

POLAR PLOT

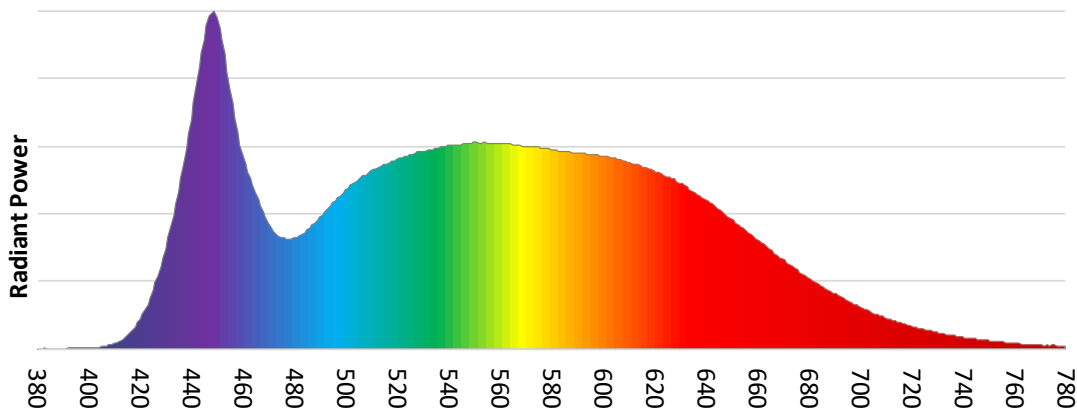


Catalog Number:	MAR-90250600HU
Measured Output:	18683 lm
Measured Peak:	978560 cd cd
Consumed Power:	856 W
Efficacy:	21.8 lm/W

Beam Angle (50%):	9.1°
Field Angle (10%):	11.1°
Cut-off Angle (3%):	11.8°

Measurement Condition:	
Ambient Temperature:	25° +/- 5° C
AC Supply:	230V/50Hz
Fan Mode:	Regulated High
Fixture Warm-up Time:	30 minutes

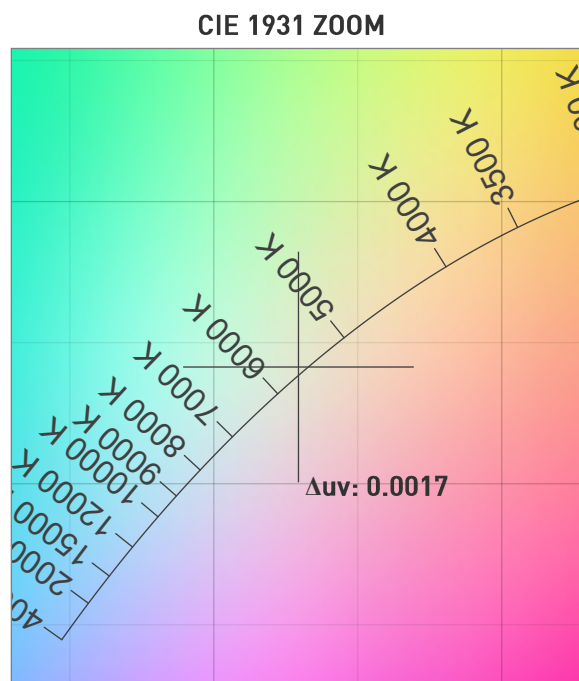
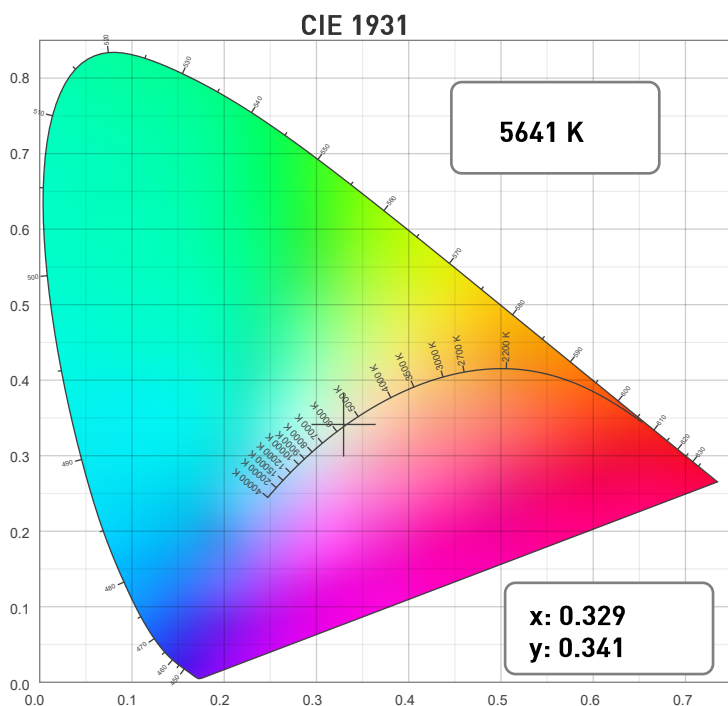
SPECTRAL DISTRIBUTION



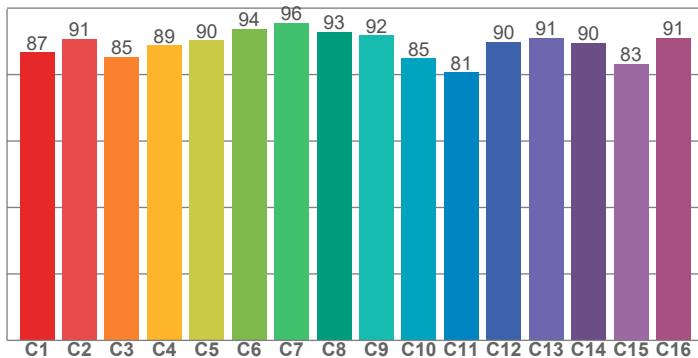
Photometric Report

MAC Encore Two – 10 Degree

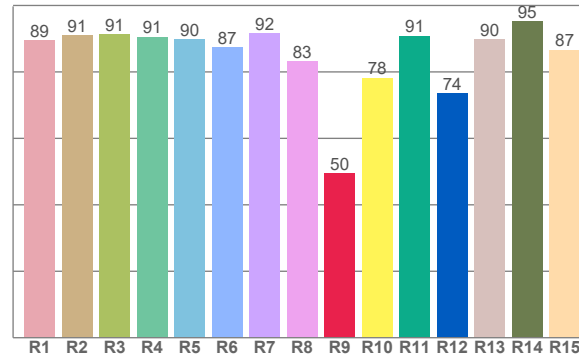
CHROMATICITY



TM30: 88.8



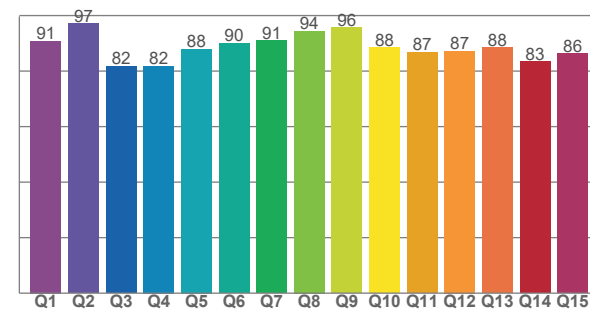
CRI: 89.3 (R1-R8)



COLOR PARAMETERS

Color Temperature	Color Rendering Index	Red Component	Color Fidelity	Color Gamut
CCT	CRI	CRI R9	TM30 Rf	TM30 Rg
5641 K	89.3	49.6	88.8	99.7

CQS: 87.9



Television Lighting Consistency Index	Color Quality Scale	Color Coordinate CIE 1931	Color Coordinate CIE 1931	Color Coordinate CIE 1964	Color Coordinate CIE 1964	Color Deviation from Black Body
TLCI	CQS	x	y	u	v	Δuv
91	87.9	0.329	0.341	0.205	0.318	0.0017

Photometric Report

MAC Encore Two – 10 Degree

TM30

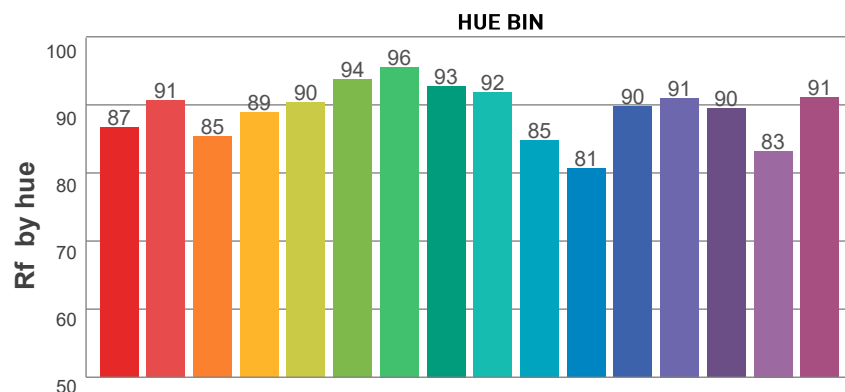
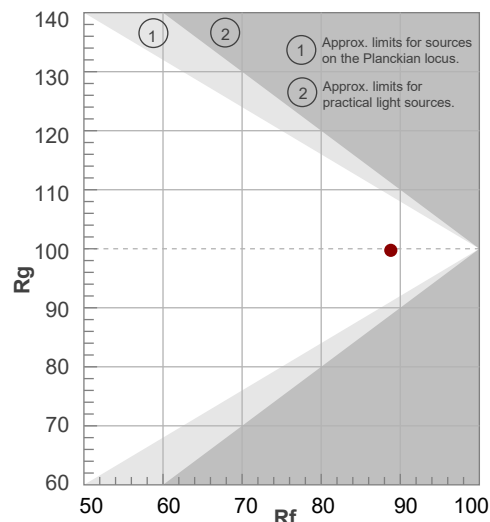
Rf 88.8

Fidelity index Rf

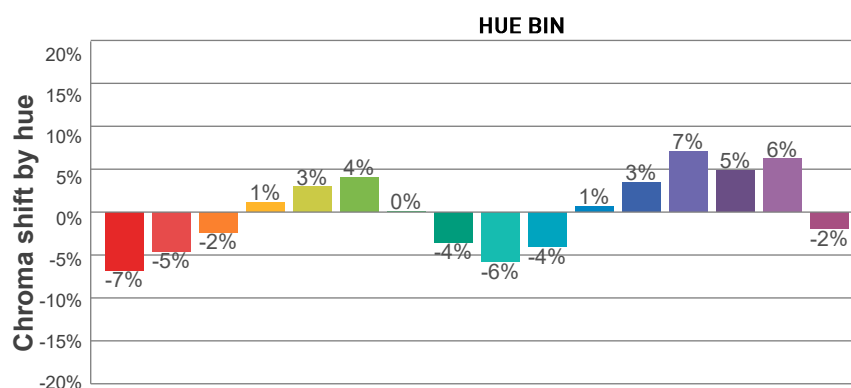
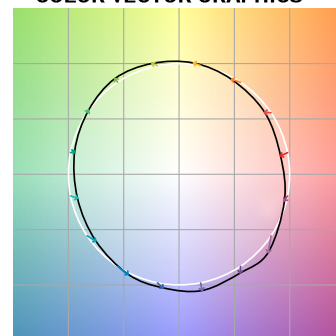
Rg 99.7

Gamut index Rg

Hue Bin	R _f	Graphic shifts (%)	
		Chroma	Hue
1	87	-7%	-2%
2	91	-5%	4%
3	85	-2%	8%
4	89	1%	7%
5	90	3%	4%
6	94	4%	0%
7	96	0%	-3%
8	93	-4%	-2%
9	92	-6%	3%
10	85	-4%	8%
11	81	1%	12%
12	90	3%	6%
13	91	7%	0%
14	90	5%	-4%
15	83	6%	-14%
16	91	-2%	-5%



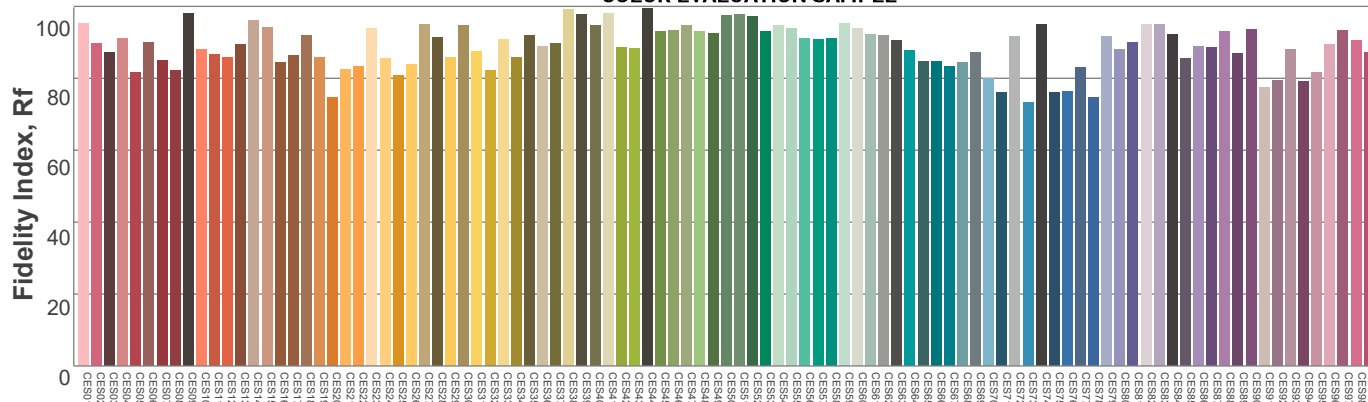
COLOR VECTOR GRAPHICS



COLOR DISTORTION GRAPHICS



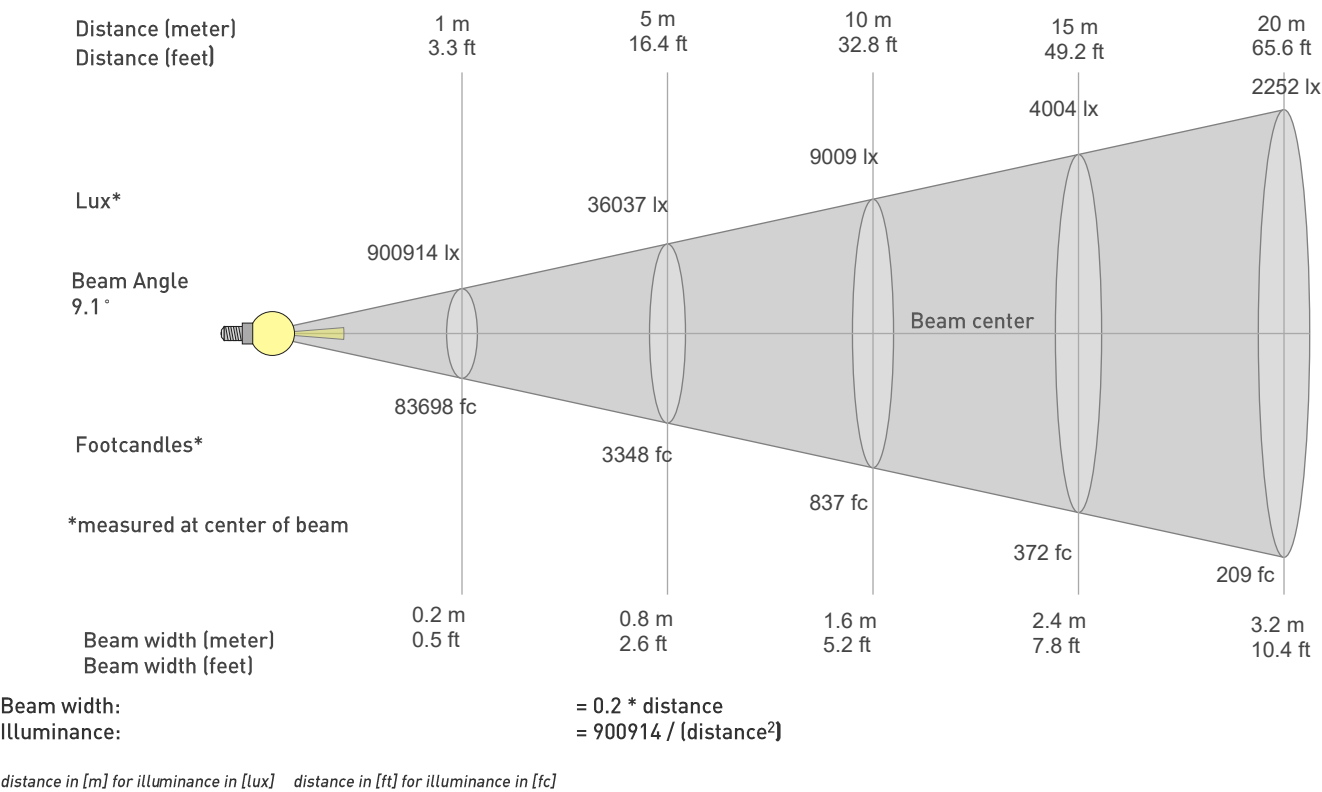
COLOR EVALUATION SAMPLE



Photometric Report

MAC Encore Two – 10 Degree

BEAM DETAILS



BEAM ILLUMINANCE FROM 1-20M

1m	2m	3m	4m	5m	6m	7m	8m	9m	10m	11m	12m	13m	14m	15m	16m	17m	18m	19m	20m
3.3ft	6.6ft	9.8ft	13.1ft	16.4ft	19.7ft	23ft	26.2ft	29.5ft	32.8ft	36.1ft	39.4ft	42.7ft	45.9ft	49.2ft	52.5ft	55.8ft	59.1ft	62.3ft	65.6ft
900914lx	225229lx	100102lx	56307lx	36037lx	25025lx	18386lx	14077lx	11122lx	9009lx	7446lx	6256lx	5331lx	4597lx	4004lx	3519lx	3117lx	2781lx	2496lx	2252lx
83697.7fc	20924.4fc	9299.7fc	5231.1fc	3347.9fc	2324.9fc	1708.1fc	1307.8fc	1033.3fc	837fc	691.7fc	581.2fc	495.3fc	427fc	372fc	326.9fc	289.6fc	258.3fc	231.8fc	209.2fc

